



# Sentinel Display Overlay Installation Guide

Triple E Technologies, LLC

Version 111816.01

Triple E Technologies, LLC  
P.O. Box 2677 Post Falls, ID 83877  
Phone: 208.777.9300 | Fax: 208.777.9304

© 2016 Triple E Technologies, LLC

All rights reserved. No parts of the content of this work may be reproduced or transmitted in any form without the written permission of Triple E Technologies, LLC.

The information in this document is subject to change without notice. Although Triple E Technologies, LLC has attempted to ensure the accuracy of the contents of this document, this document may include errors or omissions. The examples and sample programs are for illustration only and may not be suited to your purpose. You should verify the applicability of any example or sample program before placing the software into productive use. The examples in this document may not exactly replicate your system configuration, but the functions will remain the same.

The Triple E Technologies, LLC logo and OneTouch DataManager are registered trademarks of Triple E Technologies, LLC. All other brand names and trademarks associated with Triple E Technologies, LLC products and services are trademarks of Triple E Technologies, LLC. All other brand names and trademarks in this document are the property of their respective owners.

Comments, questions, or concerns? Please email all inquiries to [helpdesk@e3tek.com](mailto:helpdesk@e3tek.com)

## Table of Contents

<b>Overview</b>	<b>1</b>
Supplied Components	1
Additional Components	1
<b>Installation</b>	<b>2</b>

## Overview

The Sentinel display overlay improves screen readability and reduces glare using enhanced sun blocking technology. This guide details the steps for applying the overlay to the Sentinel display screen.

### Supplied Components

1. (1) Sterile alcohol prep pad
2. (1) Sentinel display overlay

### Additional Components

- Philips head screwdriver
- Lint-free cloth (optional)



*Regular Sentinel display*



*Sentinel display overlay*

# Installation

1. Open Sentinel door to access back of display.



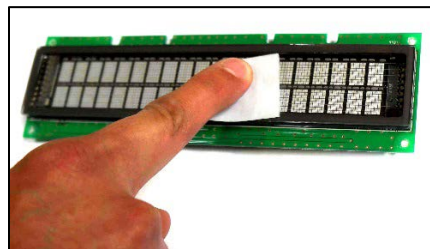
2. Unplug display power cord.



3. Unscrew the four (4) display screws and set aside.



4. Place display on flat surface and wipe clean using provided alcohol prep pad. Wipe with lint-free cloth (not provided) after cleaning.



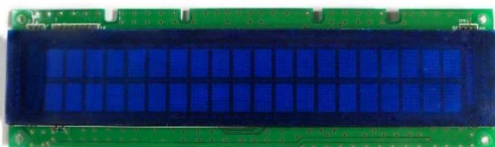
5. Remove plastic protection sheet from back of display overlay.



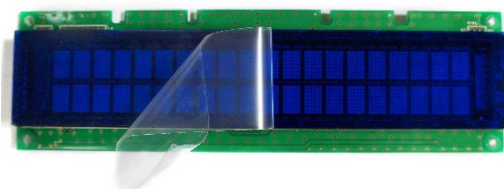
6. Remove adhesive cover from perimeter of display overlay.



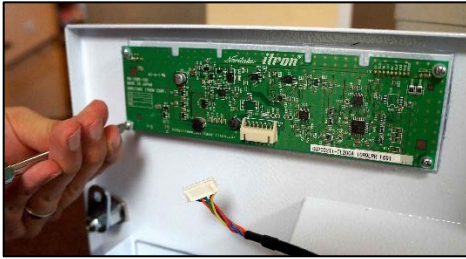
7. Align display overlay on front of display and gently press into place.



8. Remove protective sheets from front of display overlay.



9. Screw display back into place.



10. Plug in display power cord.



**- END INSTALLATION -**

**Note:** Following reinstallation, the display screen will not light up until there is activity on the Sentinel (i.e., card swipe, PIN pad entry). Once it has been activated, the display will remain on.