



SecurVision
Installation Guide
Triple E Technologies, LLC
Version 062316.02

Triple E Technologies, LLC
P.O. Box 2677 Post Falls, ID
Phone: 208.777.9300 | Fax: 208.777.9304

© 2016 Triple E Technologies, LLC

All rights reserved. No parts of the content of this work may be reproduced or transmitted in any form without the written permission of Triple E Technologies, LLC.

The information in this document is subject to change without notice. Although Triple E Technologies, LLC has attempted to ensure the accuracy of the contents of this document, this document may include errors or omissions. The examples and sample programs are for illustration only and may not be suited to your purpose. You should verify the applicability of any example or sample program before placing the software into productive use. The examples in this document may not exactly replicate your system configuration, but the functions will remain the same.

The Triple E Technologies, LLC logo and OneTouch DataManager are registered trademarks of Triple E Technologies, LLC. All other brand names and trademarks associated with Triple E Technologies, LLC products and services are trademarks of Triple E Technologies, LLC. All other brand names and trademarks in this document are the property of their respective owners.

Comments, questions, or concerns? Please email all inquiries to helpdesk@e3tek.com.

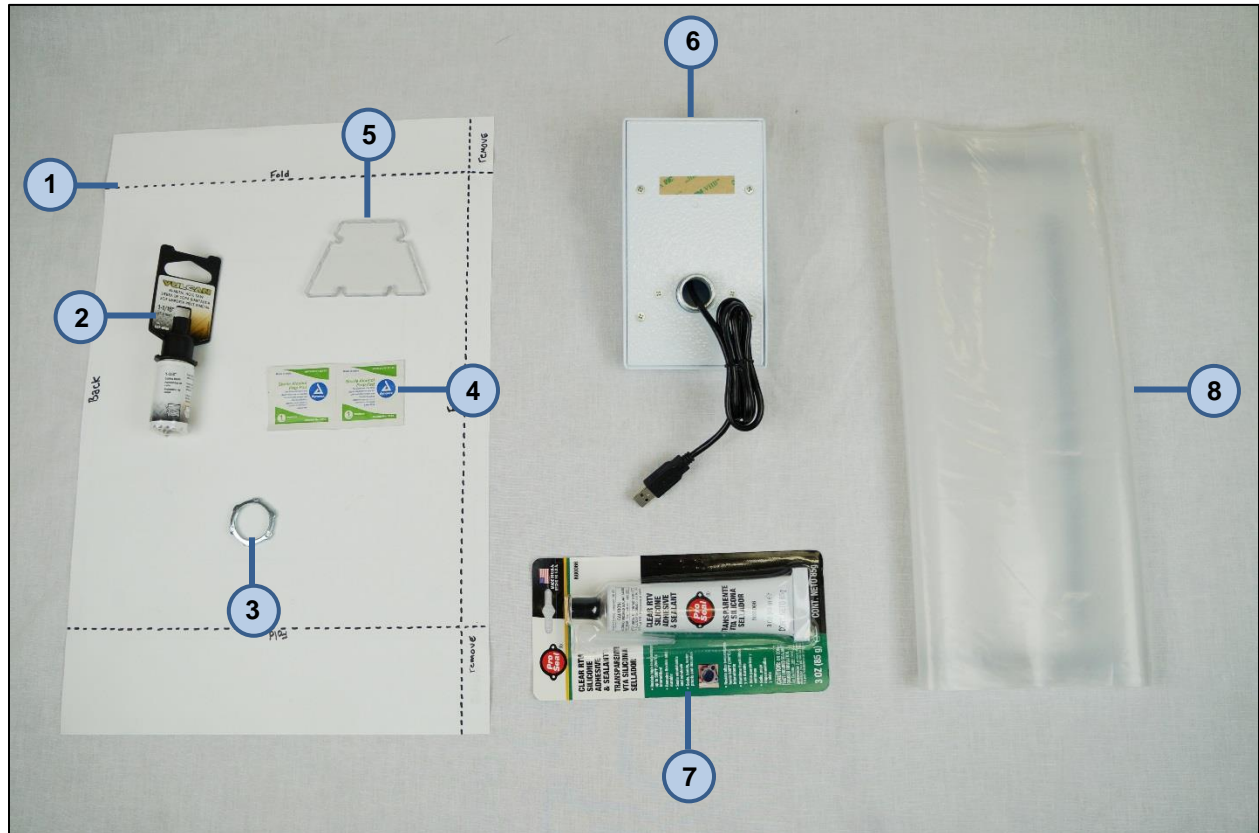
Table of Contents

Overview	1
Manufacturer Supplied Components	1
Additional Required Components	1
Installation	2

Overview

This guide details the procedures for attaching and connecting a SecurVision camera to a Sentinel.

Manufacturer Supplied Components



1. (1) Drill template
2. (1) 1 and 1/16th in. (27mm) hole saw with auger bit
3. (1) Nut
4. (2) Sterile alcohol prep pad
5. (1) SecurVision replacement window
6. (1) SecurVision camera
7. (1) Clear RTV silicon adhesive
8. (1) Plastic sheet w/ attached magnets

Additional Required Components

- Power drill
- Hammer
- Pliers

Installation

1. Place drill template on top of Sentinel.



2. Center hole saw on template and score Sentinel. When finished, remove and discard template.



3. Using the plastic sheet, cover internal hardware components to protect from residual shavings.



4. Use power drill (not provided) and hole saw to drill hole through score mark.



5. Clear area of any shavings, then use alcohol wipes to prepare surface for installation.



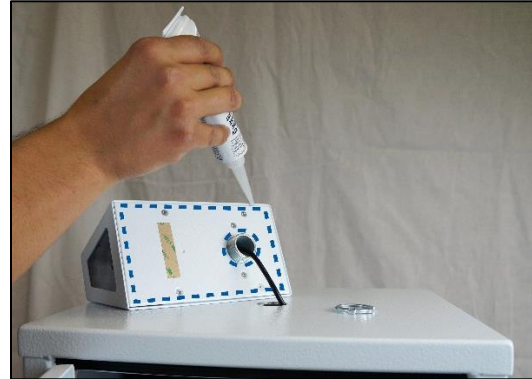
6. Remove and discard plastic sheet.



7. Unbundle SecurVision cord and remove nut, then feed cord through the drill hole.



8. Apply generous amount of silicon to perimeter of SecurVision camera to ensure tight waterproof seal.



9. Remove paper from positioning tape.



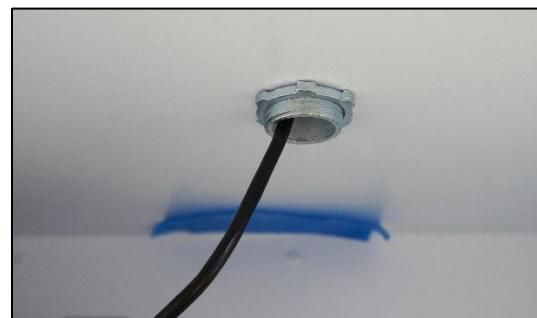
10. Align SecurVision camera over drill hole and ensure camera face is parallel to front of chassis.



11. Press SecurVision camera down firmly and hold for several seconds.



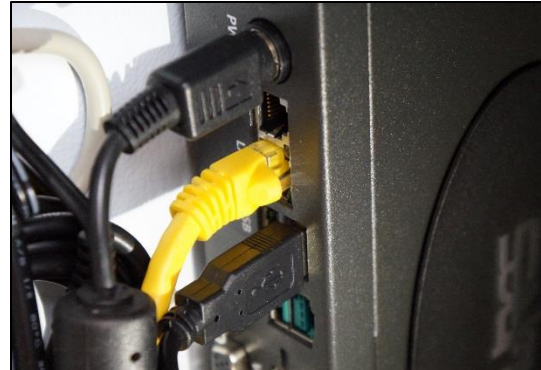
12. Thread nut over USB cord and secure to bottom of camera, then tighten with pliers (not provided).



13. Remove any excess silicon.



14. Plug USB into an available USB port.



- END INSTALLATION -

Your SecurVision Sentinel is now fully assembled. Please contact Triple E Customer Support by phone at (888) 407-6077 or by email at helpdesk@e3tek.com for assistance configuring the SecurVision software. To learn more about using SecurVision, please see our [SecurVision User Guide](#).